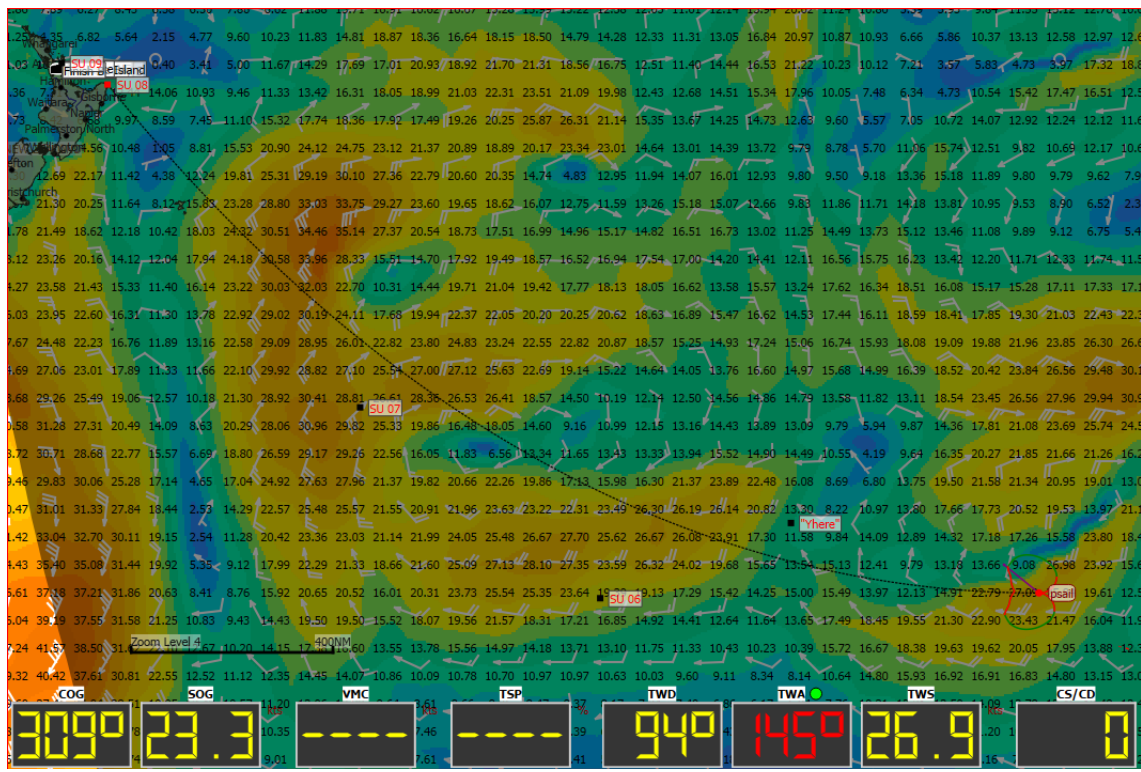
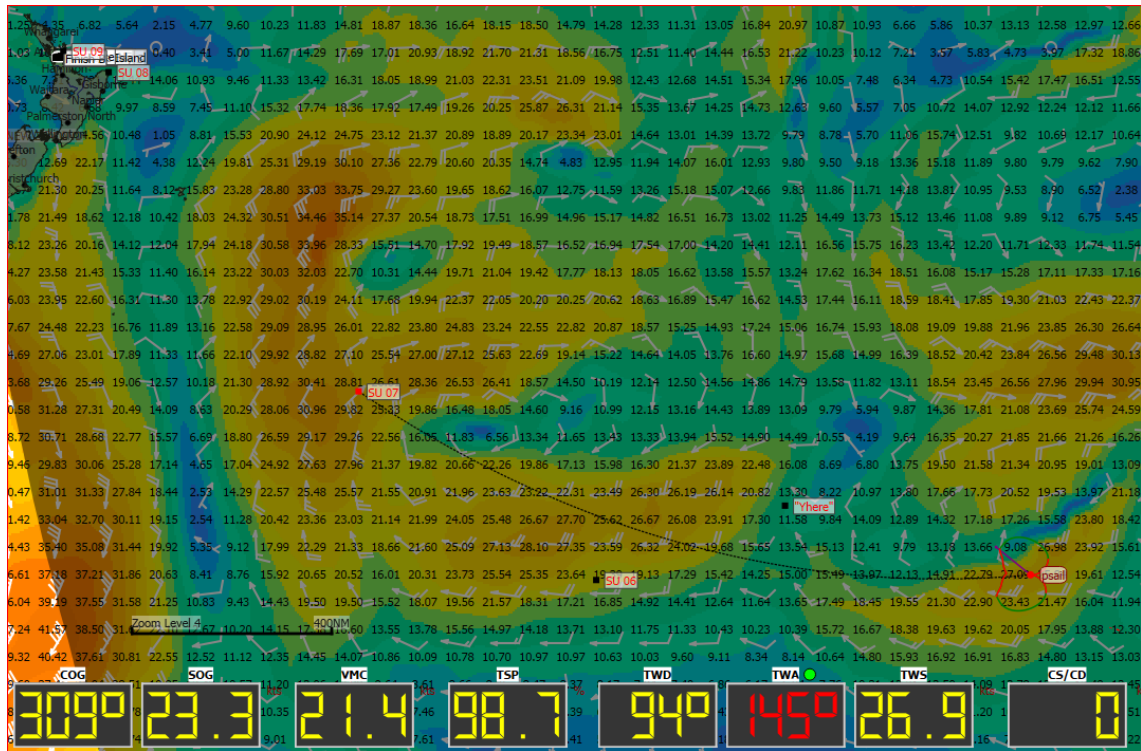


1 - VMC calculation problem.

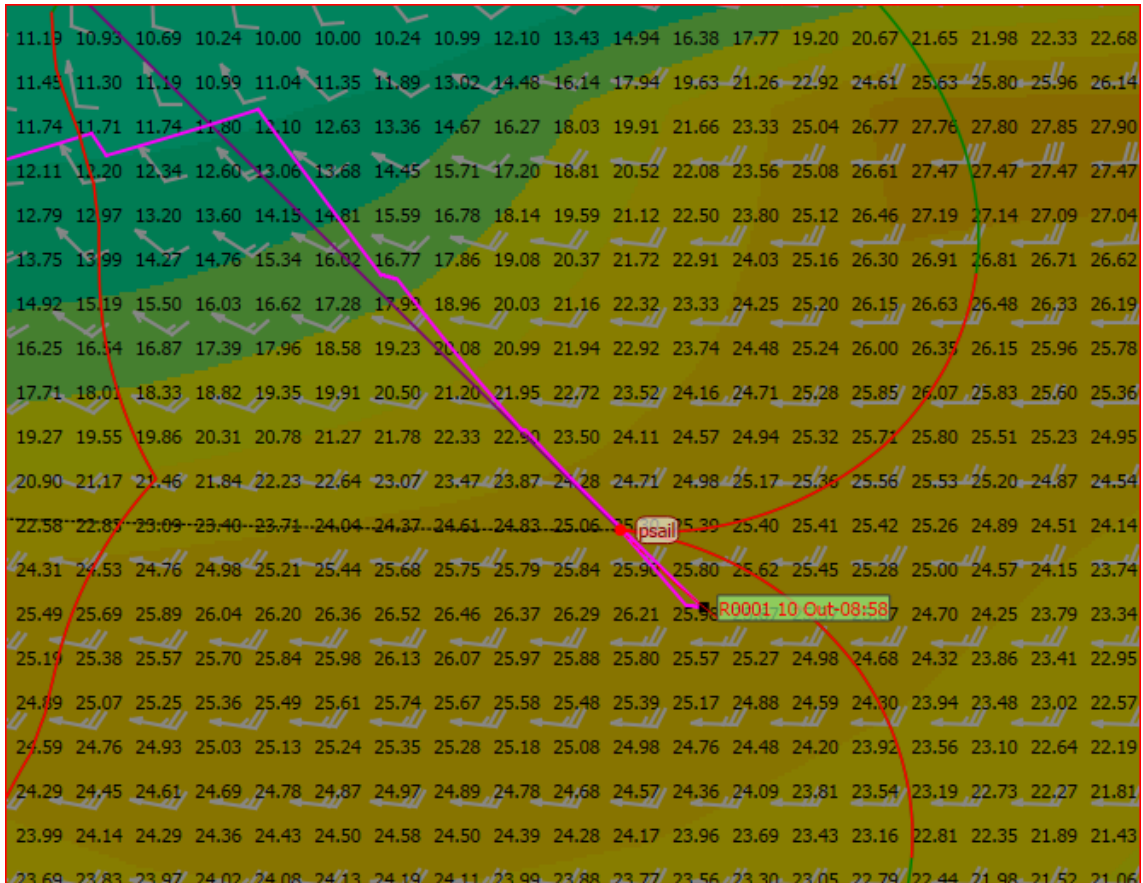
If you change the Waypoint for VMC calculations purpose the VMC isn't displayed.



2 - "Past" waypoints remain.

On large routings with the GPS connected, after making the route, the boat is already at some distance forward from the first calculated waypoints.

qT should automatically eliminate those waypoints "in the past", otherwise you have to make a "negative route".



3 - Routes and waypoints management.

QT still lacks a routes and waypoints management system. When you open qT for making a particular routing you don't need to load all the previous routes and waypoints that accumulate and, only contribute to consume memory and time spent finding the waypoints you really need.

My previous suggestions were on that direction. A simple database with the routes you make and each route with the correspondent waypoints, instead of a general tab where you have all the kept waypoints which tend to grow quickly.